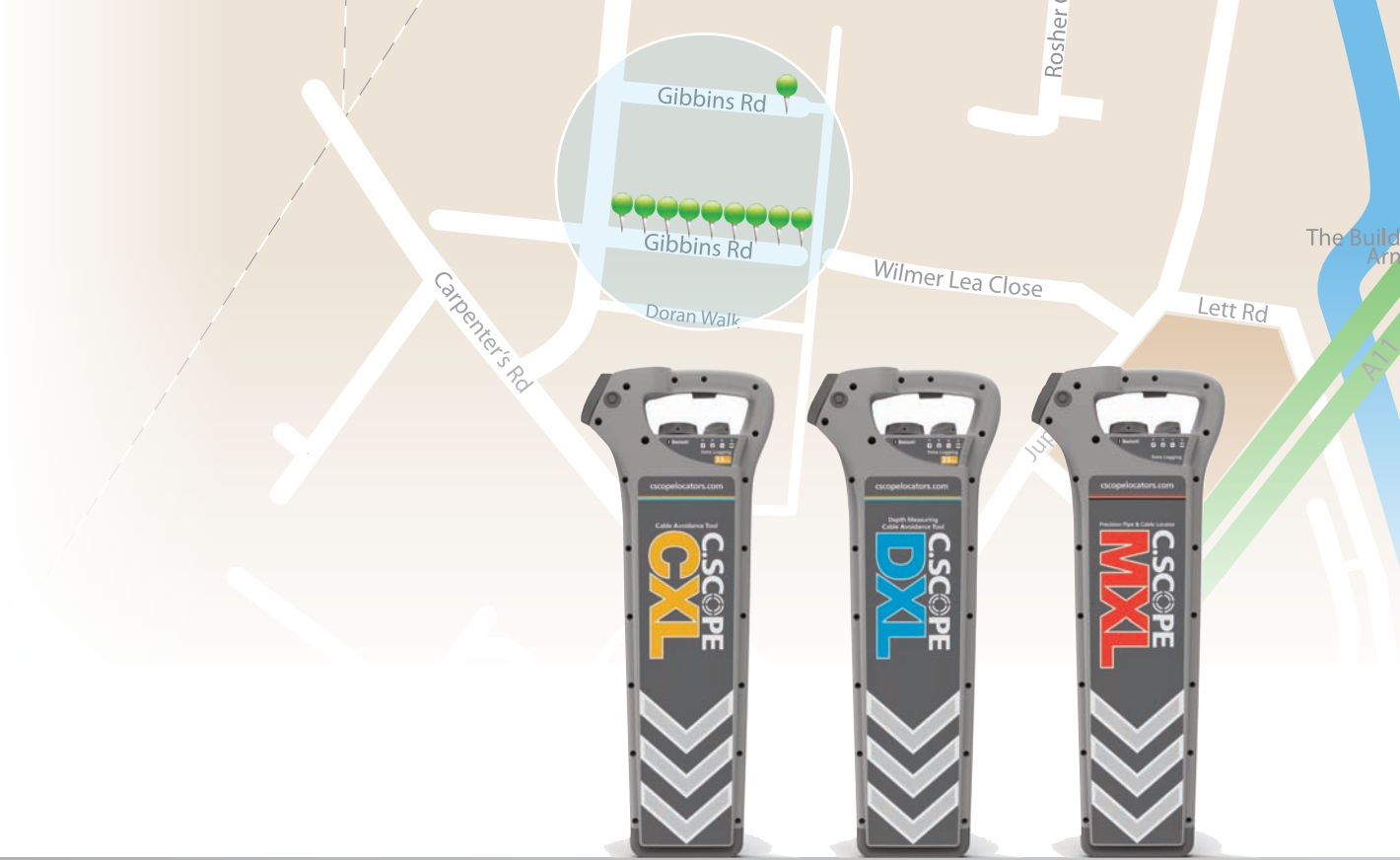
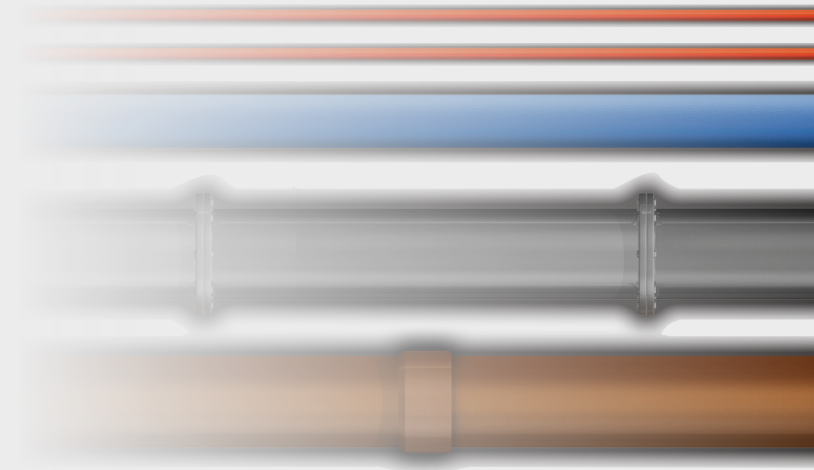


C.SCOPE[®]



DATA LOGGING CABLE AVOIDANCE TOOLS



WHAT? WHERE? WHEN? HOW?

DATA LOGGING USING CABLE AVOIDANCE TOOLS

For many years the use of C.Scope Cable Avoidance Tools and Signal Generators has helped utility operators avoid personal injury by pinpointing the position of pipes and cables prior to excavation work commencing.

So effective are these devices that the use of a Cable Avoidance Tool and Signal Generator is now standard practice in the utility and groundwork industries. In the UK the Health and Safety Executive (HSE) now expect these products to be used in all of their detecting modes before every excavation.

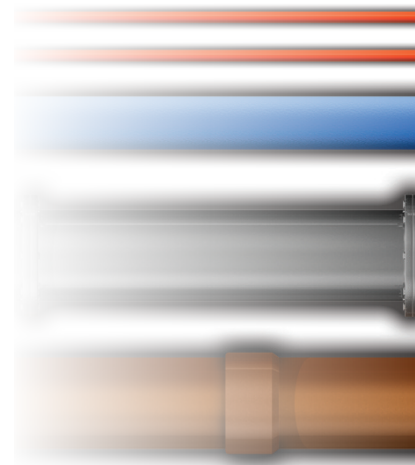
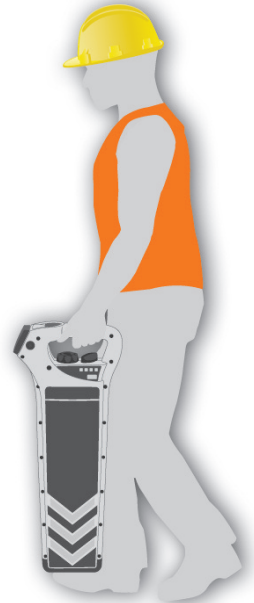
There is no doubt that, with the Cable Avoidance Tool being adopted into everyday use, huge advances in safety have been made BUT, despite this, cable strikes still happen leading to operator and third party injury and costly investigations.

One of the key questions that need to be answered in the event of a cable strike is; "Was the Cable Avoidance Tool actually used before the excavation work began?" And, if it was used "Was it used fully and correctly?"

To assist in further reducing cable strikes and personal injury, C.Scope have introduced a range of Data Logging Digital Cable Avoidance Tools based on the recently released CXL, DXL and MXL range of digital products.

The new models have built in Data Logging which records, every second, exactly what the operator is doing without any change to daily working practices. The stored data can then be retrieved for review.

C.Scope believe that this is a major step forward for those contractors and utilities that wish to develop their training programmes, to improve their operator skills and most importantly to reduce cable strikes.





LOG
TIME / DATE



LOG
SERIAL
NUMBER



LOG
DETECTION MODE
P R G/T AS



LOG
SIGNAL
STRENGTH



LOG
DEPTH
DXL/MXL only



LOG
FREQUENCY



LOG
SONDE
DXL/MXL only

FEATURES

DATA LOGGING OF OPERATOR ACTIVITY

C.Scope Data Logging Cable Avoidance Tools will **LOG** 80 hours worth of operator activity including:

- Cable Avoidance Tool MODEL TYPE
- TIME/DATE STAMP
- USER ID and SERIAL NUMBER of asset
- DETECTION MODE (POWER - RADIO - GENERATOR/TRANSMITTER - ALLSCAN Modes)
- SIGNAL STRENGTH
- DEPTH (GENERATOR/TRANSMITTER Mode only)
- Signal Generator/Transmitter FREQUENCY
- SONDE

THREE MODEL TYPES

Data Logging is available on C.Scope's entire range of digital Cable Avoidance Tools in three new model types.

CXL-DLB Cable Avoidance Tool

DXL-DLB Cable Avoidance Tool with Depth

MXL-DLB Multi-Frequency Locator

All C.Scope Data Logging products are used in exactly the same way as the standard range of digital Cable Avoidance Tools so no extra training is needed.

COMPATIBILITY

Fully compatible with SGA/SGV Signal Generators, MXT Transmitter and C.Scope Sondes.

MAINTENANCE

As with ALL C.Scope digital Cable Avoidance Tools - No yearly calibration checks required.

DATA RETRIEVAL

All logged data can be transferred from the Cable Avoidance Tool directly to a Windows® based PC or indirectly via a mobile smartphone for later analysis.

80 HOURS OF OPERATOR ACTIVITY DATA
LOGGED AND SENT TO PC AND/OR MOBILE DEVICE



THREE MODEL TYPES CXL-DLB DXL-DLB MXL-DLB
COMPATIBLE WITH C.SCOPE SGA SGV MXT



DATA RETRIEVAL

Whether you wish to analyse the data on the Cable Avoidance Tool immediately e.g. after a cable strike; after general daily use; or at a later date as part of a long term review - CXL, DXL and MXL Data Logging Cable Avoidance Tools use Bluetooth® communication to enable the data to be transferred easily to a PC or smartphone.



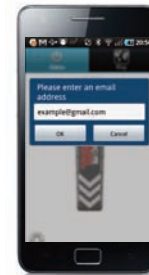
Android™
APP



Transfer
data log



Review



Send
to PC

PC CONNECTIVITY

In order to retrieve logged data from the Cable Avoidance Tools, simply use the free C.Scope Software Toolkit, which enables all the data to be transferred to a Windows® based PC via Bluetooth®

Once transferred to a PC, the data can be interrogated by the C.Scope Software Toolkit to show how and when the Cable Avoidance Tool was used. The data can also be imported into a spreadsheet or your own reporting software.

MOBILE PHONE CONNECTIVITY

C.Scope has a mobile phone APP that allows the logged data to be transferred from the Cable Avoidance Tool to an Android™ smartphone. Once transferred to the smartphone, it can be sent to anyone via text or email.

The benefit of using a smartphone for data log retrieval is that a phone is more convenient to carry and use than a bulky laptop and can allow data to be transferred 'off site' faster and more cost effectively.

GPS (Global Positioning System)

If the smartphone has a GPS capability then this information can be added to the data log from the Cable Avoidance Tool, so that now **THREE** key elements of information about the Cable Avoidance Tool's usage are recorded: **WHEN** it was used, **WHERE** it was used and **HOW** it was used.

Adding Photos

Once the data has been transferred to a smartphone, additional information such as site photographs can be added and then the entire file can be forwarded by email or text attachment to anyone, anywhere, providing a comprehensive record of events.

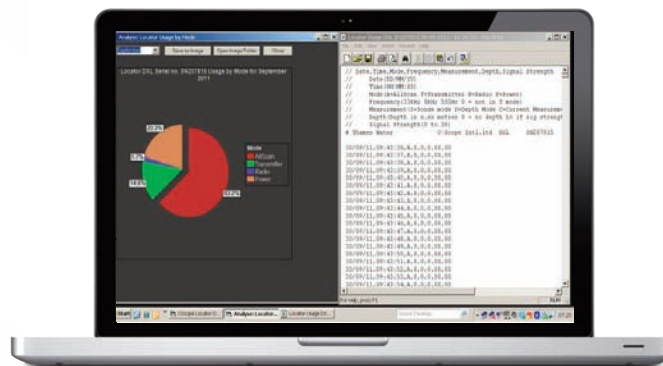
SURVEYING INSTRUMENT CONNECTIVITY

C.Scope's new Data Logging Cable Avoidance Tools are compatible with major survey equipment manufacturers handheld sub-metre positioning instruments.

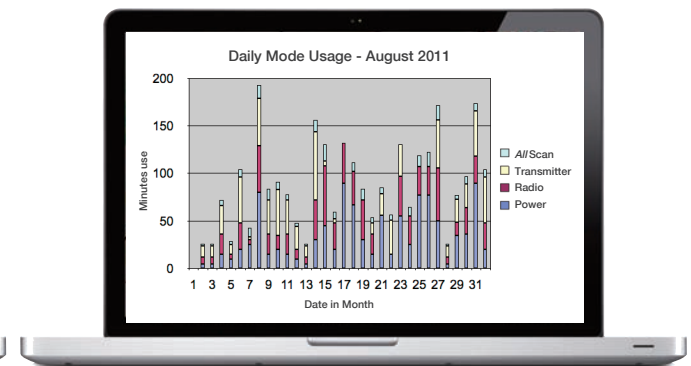
In addition, the Data Logging files can be saved in .csv format ensuring easy integration into GIS (Geographic Information System), task scheduling, mapping, surveying, site management and asset tracking software solutions.



C.Scope Software Toolkit



C.Scope Software Toolkit shows
time-stamped data files and mode usage chart



.csv file integration of data
into a third party application

BENEFITS

SAFETY

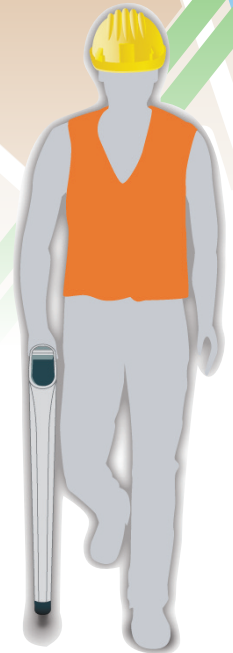
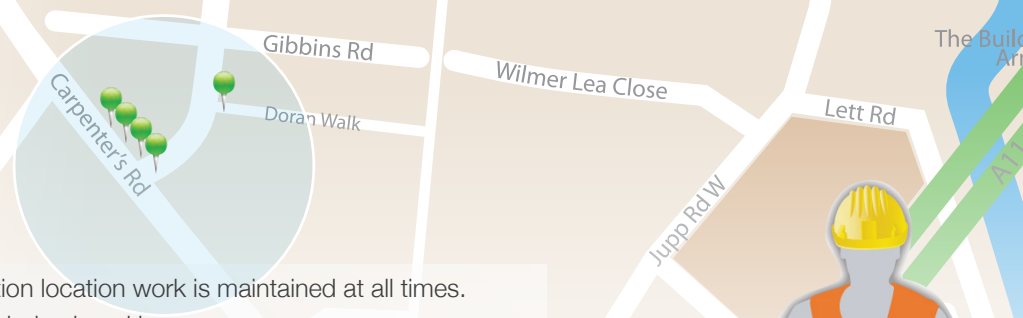
- Ensure that a high standard of cable detection location work is maintained at all times.
- Improve field-operative safety by identifying behavioural issues.
- No additional operator retraining required.

TRAINING

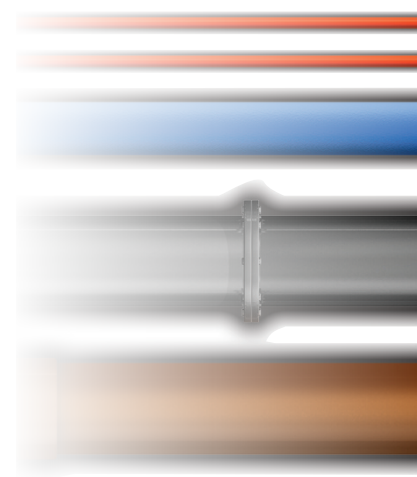
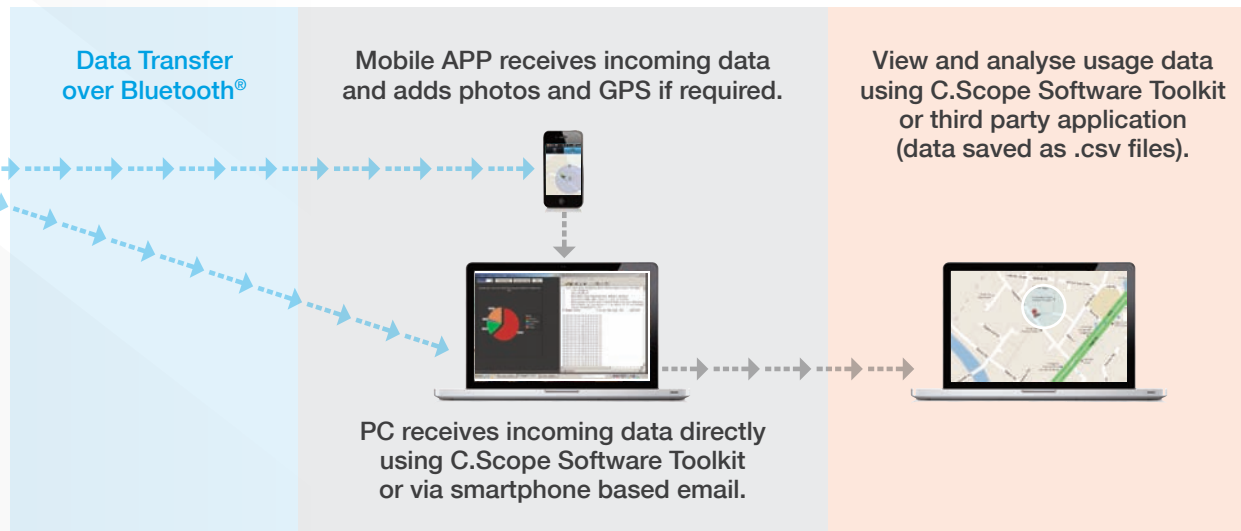
- Provide evidence of correct use after routine training courses.
- Allow specific training needs to be clearly identified with individual users.
- Compare Cable Avoidance Tool usage across the workforce.

TRACKING

- Establish duration and frequency of Cable Avoidance Tool use during daily work schedules.
- Provide confirmation of use of equipment in the event of a cable strike.
- Downloaded operator usage data can be reviewed as part of a Health & Safety investigation.
- Establish who was doing what, where, when and how.
- Improve on-line risk assessments and method statements.
- Dispute avoidance and resolution.



Operators use C.Scope Data Logging Cable Avoidance Tool. All usage recorded.



DATA LOGGING CABLE AVOIDANCE TOOLS

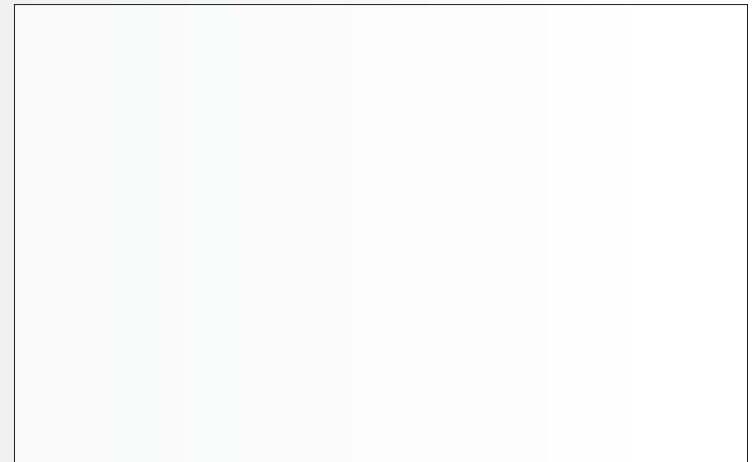
Minimum system requirements: Bluetooth[®] enabled PC with Microsoft[®] Windows[®] XP SP2, Windows Vista[®], Windows 7 (32/64bit).
Minimum smartphone requirements: Android[™] 2.2 or above with Bluetooth[®] and GPS.

C.SCOPE INTERNATIONAL LTD
Kingsnorth Technology Park
Wotton Road
Ashford
Kent TN23 6LN
United Kingdom
Telephone +44(0)1233 629181
Fax +44(0)1233 645897
email info@cscope.co.uk

www.cscopelocators.com

Windows[®] is a registered trademark of Microsoft Corporation in the United States and other countries.
Android[™] is a trademark of Google Inc.

Copyright© 2011 C.Scope International Ltd
C.Scope has a policy of continuous product development and reserves
the right to change the design, specification and labelling without notice. All errors and omissions excepted.



All C.SCOPE products are manufactured
under a quality system accredited to ISO9001:2008

