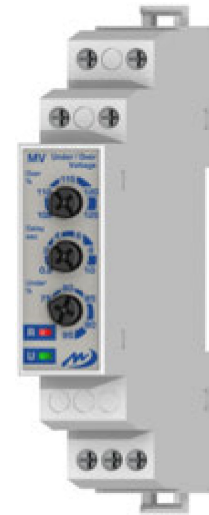


- ▶ MEASURES PHASE TO PHASE VOLTAGE
- ▶ UNDER AND OVER VOLTAGE TRIP LEVEL SETTING
- ▶ UNDER AND OVER VOLTAGE TIME DELAY SETTING
- ▶ PHASE SEQUENCE AND LOSS CONTROL (only S or N version)
- ▶ NEUTRAL LOSS (only N version)
- ▶ OUTPUT RELAY 1 POLE CHANGEOVER CONTACT
- ▶ COMPACT SIZE - 1 MODULE - 17.5mm
- ▶ DIN RAIL MOUNTING EN50.022
- ▶ SELF-EXTINGUISHED MATERIAL UL94 V0



■ TYPICAL APPLICATION: SUPPLY VOLTAGE MONITORING

EU Directives - CE Marking:

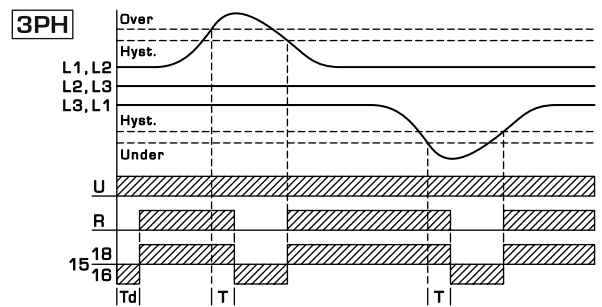
> 2014/30/UE - EMC

> 2014/35/UE - LVD

TECHNICAL DATA

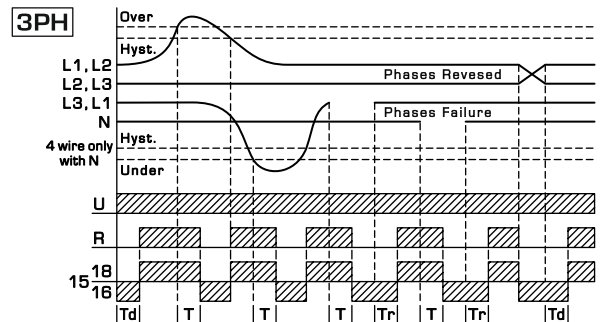
INPUT	UNIT	MVTGBD1	MVTGBD1S	MVTGBD1N
Supply voltage AC ±10%	V~	3 x 400	3 x 400	3 x 400+N
Nominal Frequency	Hz	50 - 60 (range: 47 - 63)		
Trip Levels	Under Over	75 - 95% of U 105 - 125% of U		
Power consumption (max. AC)	VA	16		
Supply indication (U)	-	Green LED		
OUTPUT RELAY				
Rating	-	8A - 250V~/24V---		
Max switching power	VA	2000		
Max switching voltage	V~	400		
Min switching load	-	10mA 12V---		
Contact life	Mech. Electr.	30 x 10 ³ ops 100 x 10 ³ ops		
Changeover contacts	-	AgNi0.15		
Output Indication (R)	-	Red LED		
GENERAL				
Hysteresis (factory set)	%	+/- 2 of trip level		
Response Time	ms	100		
Time Range (T)	s	0.2 - 10		
Delay from Failure (Tr)	ms	100		
Power on delay (Td)	ms	100		
Working temperature	°C	-20 / +50		
Storage temperature	°C	-30 / +70		
Electrical Insulation	kV	4		
Overshoot Category	-	III		
Protection degree	IP	20		
Pollution degree	-	2		
Relative Humidity w/o cond.	RH%	90		
Altitude up to	m	2000		
Weight	g	65		
Dimensions	mm	98 x 17.5 x 64		

FUNCTIONS - MVTGBD1



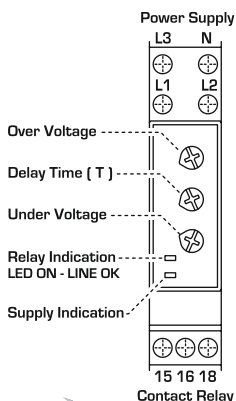
When Line is OK the R led and Relay are ON
(Without Phase Sequence)

FUNCTIONS - MVTGBD1S/N

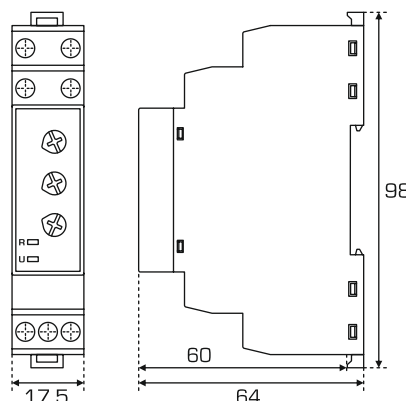


When Line and Phases are OK the R led and Relay are ON

DESCRIPTION



DIMENSIONS (mm)



WIRING DIAGRAM

